

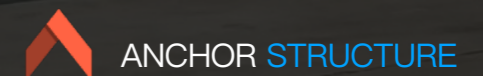
ANCHOR STRUCTURE

Elevating the Building & Living Experience



Anchor4PL Inc.
2 Robert Speck parkway,
Suite 750, Mississauga, ON
Canada L4Z 1H8
www.anchor4pl.com

Partnership/Sales:
Colin Chen +1-416-278-0049
Carrie Su +1-647-889-8846
Email: sophia.su@anchor4pl.com



INDEX

Elevated Beach House

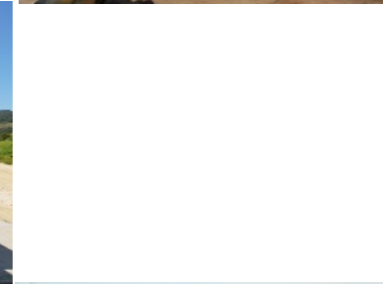
- 939 sq ft ----- 3
- 714 sq ft -----4
- 544 sq ft -----5

Luxury Prefab House

- 860 sq ft -----6
- 1600 sq ft -----7
- 2400 sq ft -----8

Project Workflow -----9

Anchor's Strength -----10





Light Steel Elevated 939 sq ft Prefab House

MHPR04

Property Type	Bedrooms	Bathrooms
Single Family Home	2.5	2
Size	Floors	Built Time
939.9 sq ft	1	2 months



Light Steel Elevated 714 sq ft Prefab House

MHPR04

Property Type	Bedrooms	Bathrooms
Single Family Home	2.5	1
Size	Floors	Built Time
714.2 sq ft	1	2 months



Light Steel Elevated 544 sq ft Prefab House

MHPR04

Property Type	Bedrooms	Bathrooms
Single Family Home	2	1
Size	Floors	Built Time
544.8 sq ft	1	2 months



(3D design sketch)



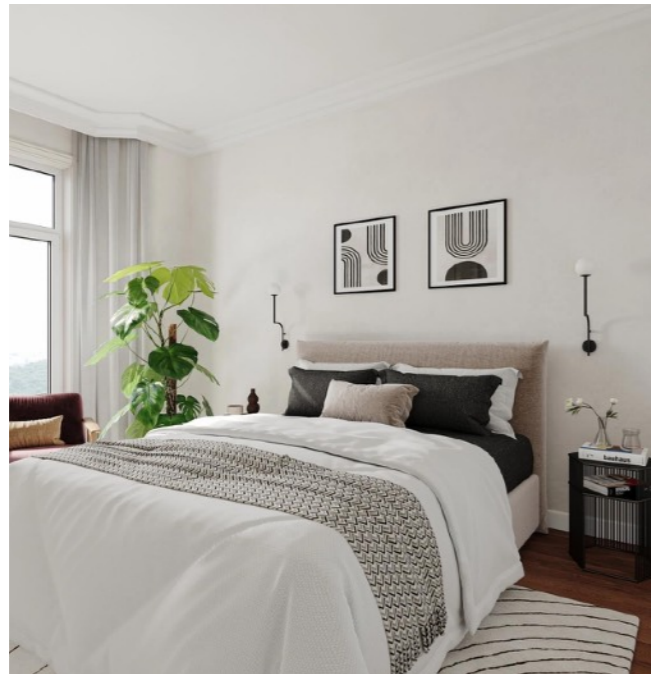
Light Steel Luxury 860 sq ft Prefab House

MHPR04

Property Type	Bedrooms	Bathrooms
Single Family Home	1	1
Size	Floors	Built Time
860 sq ft	1	2 months



(3D design sketch)



Light Steel Luxury 1600 sq ft Prefab House

MHPR04

Property Type	Bedrooms	Bathrooms
Single Family Home	2	2
Size	Floors	Built Time
1600 sq ft	2	2 months



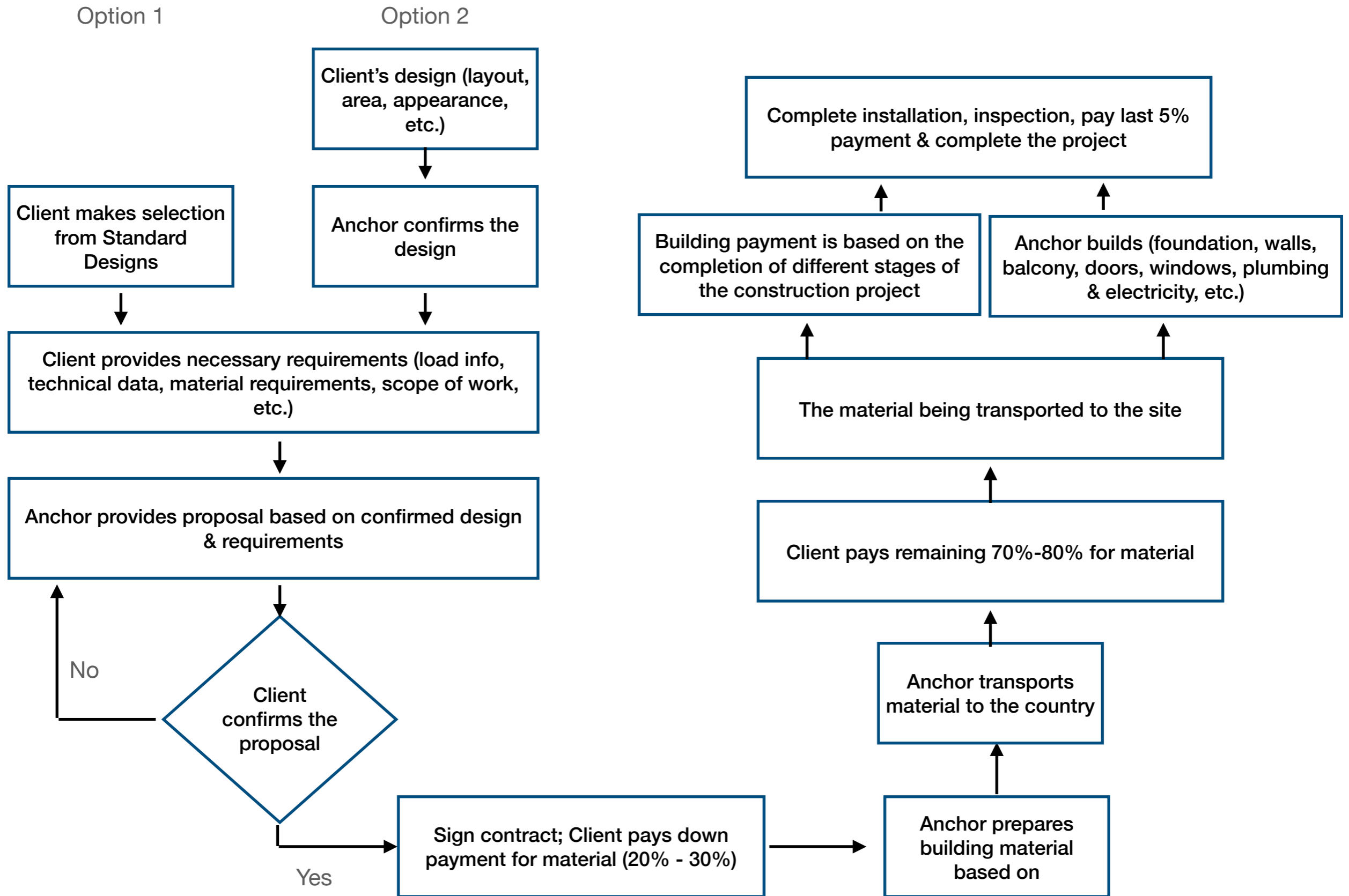
(3D design sketch)



Light Steel Luxury 2400 sq ft Prefab House

MHPR04

Property Type	Bedrooms	Bathrooms
Single Family Home	3	2
Size	Floors	Built Time
2400 sq ft	2	2 months



SECURITY

Steel plate is resistant to corrosion, acid and rust

QUALITY

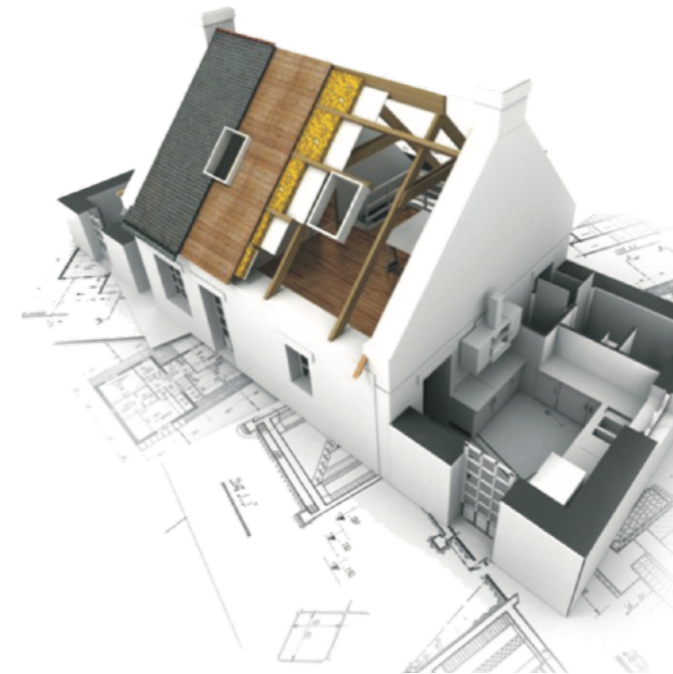
Yield strength is in Q345 or Q550

SIMPLICITY

No more digging deep column base or strip base



Anchor has rich experience in integrated housing engineering. The professional technical team has provided over 2000 cooperative customers with design, installation and maintenance services.



ANCHOR STRUCTURE

Elevating the Building & Living Experience



Anchor4PL Inc.
2 Robert Speck parkway,
Suite 750, Mississauga, ON
Canada L4Z 1H8
www.anchor4pl.com

Partnership/Sales:
Colin Chen +1-416-278-0049
Carrie Su +1-647-889-8846
Email: sophia.su@anchor4pl.com

